



- ◆ Caregiver alert if wearer is outside Safe Zone
- ◆ Caregiver alert if wearer falls down
- ◆ Caregiver alert if wearer removes Finder
- ◆ Caregiver tells Finder to call 911 nearest wearer and Finder sends GPS location to 911-Operator

911Finder is different, because you are in charge --

Finder provides peace of mind for the caregiver that the wearer is safe. The wearer could have dementia, Alzheimer's, autism, or is just prone to wander. When the wearer walks away from the premises, the caregiver receives a notification that the wearer has gone beyond a location set by the caregiver.

If the wearer gets lost or has an emergency, a push of the button calls their caregiver. The caregiver receives the wearer GPS location and can help the wearer back to safety. If the caregiver believes the wearer has an emergency situation, the caregiver taps an icon on their phone to use our patented method that tells the Finder to call the 911-Operator located closest to the wearer. Finder provides the 911-Operator the real-time GPS location of the wearer so emergency responders can help the wearer get back to safety.

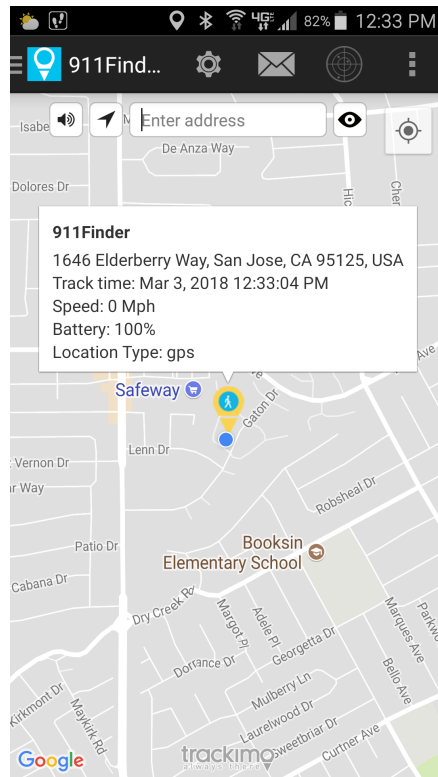
Finder works over a nationwide cellular service so the wearer could be right at home, five blocks away, or many miles away. So even if the wearer got on a city bus or took the family car, Finder notifies the caregiver immediately. If the caregiver is away from their normal location it's not a problem, they still receive the notification on their phone.

Wearer Friendly

- Press 1 button to call caregiver
- Auto answers call from caregiver and provides superior volume
- Press 1 button to hear time
- Screen shows status and time
- BlueTooth for earpiece
- Finder band fits wrists from children up to adults
- Waterproof / shock resistant

Caregiver Friendly

- Free Finder App for Android, iOS
- One tap to call wearer
- One tap to get wearer's GPS location shown on Google Maps® with speed and direction
- Automatic location detection using WiFi if Finder is inside a building
- Caregiver can authorize additional caregivers with access to the Finder
- Finder App can have access to multiple Finders
- Heart rate/blood pressure sensor
- Low battery alert
- Convenient 4-pin magnetic charger cable to USB interface



Specifications

- Network: 3G/HSPA GSM
- Frequencies: 850/900; 1900/2100
- FCC certification
- GPS and AGPS and indoor WiFi location
- 6-axis gyroscope for Fall alert
- Heart rate/blood pressure sensor
- BlueTooth 4.0 for earpiece
- Size: 1.8" (H) x 1.8" (W) 0.6" (D)
- Weight: 2.5 OZ.
- Waterproof IP67
- Working Temp: -4 degrees to 160 F degrees
- Battery Capacity: 750 mAh
- Standby Time: 32 hours
- Talk Time: 2 hours
- Charging time: 2 hours

Pre-Production